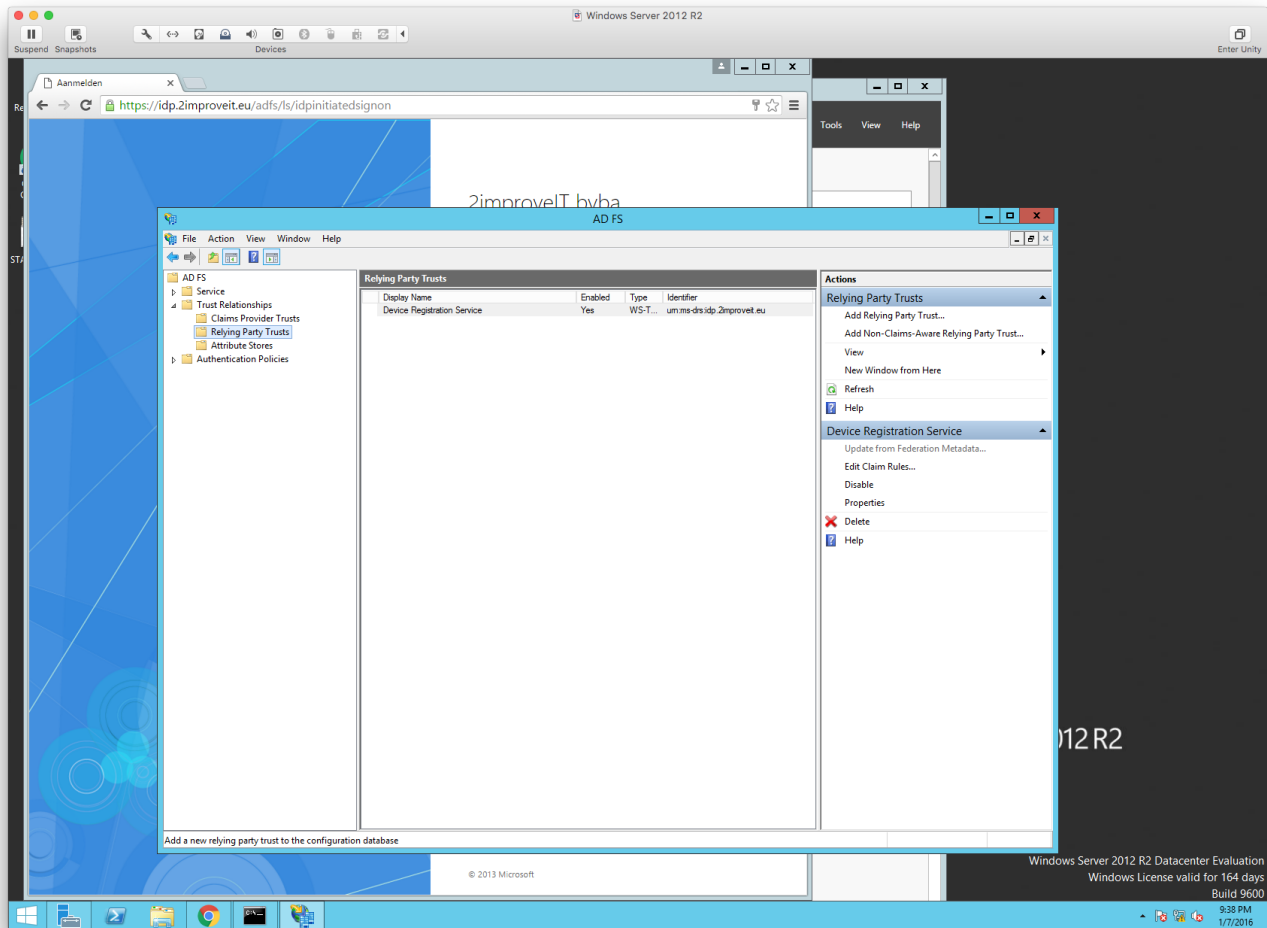


Configure Active Directory FS as your IdP Server

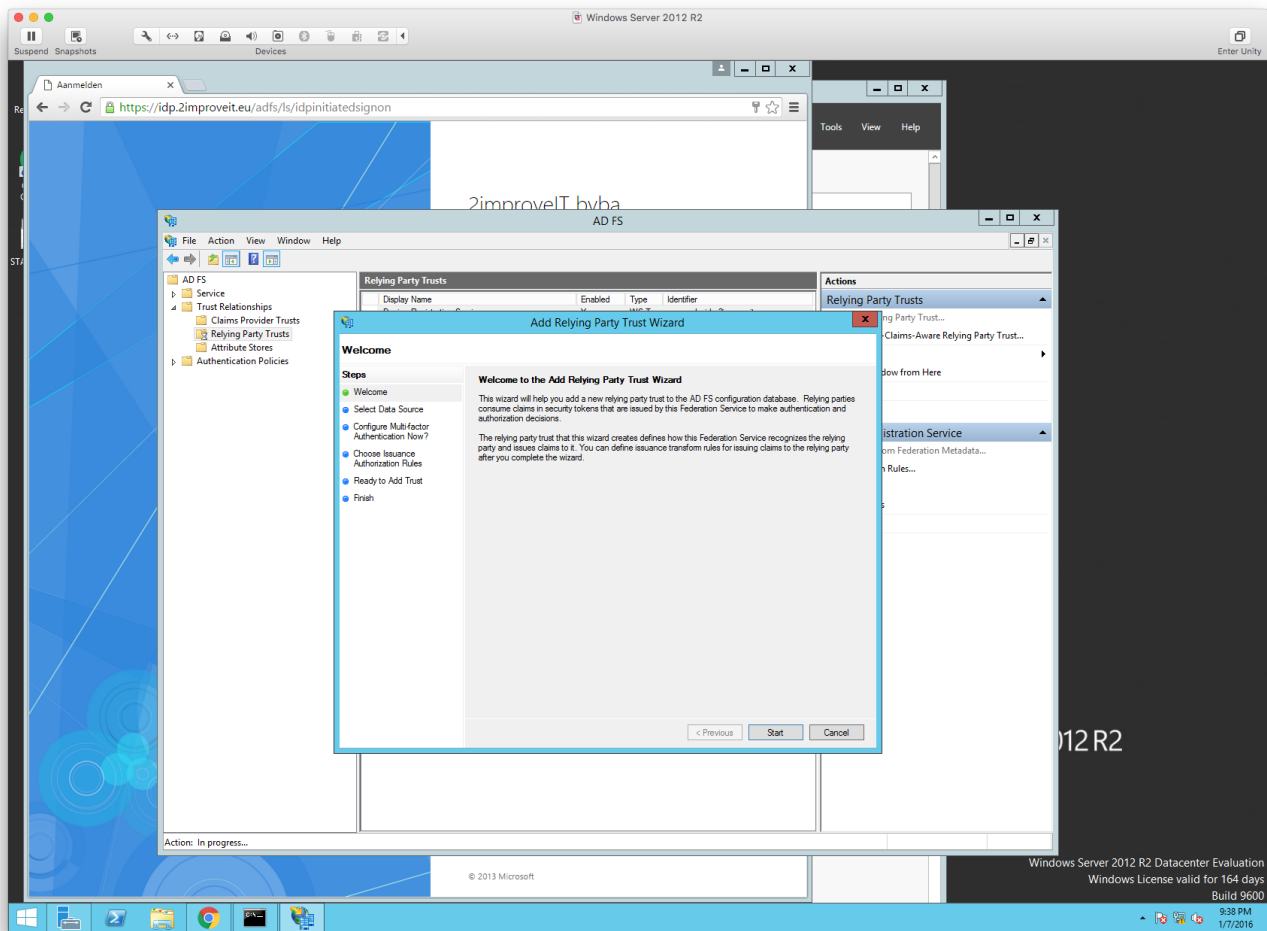
The SP metadata xml can be retrieved using the url of the ADFS Server :

The url of the Adfs was : <https://<adfs-server>/FederationMetadata/2007-06/FederationMetadata.xml>

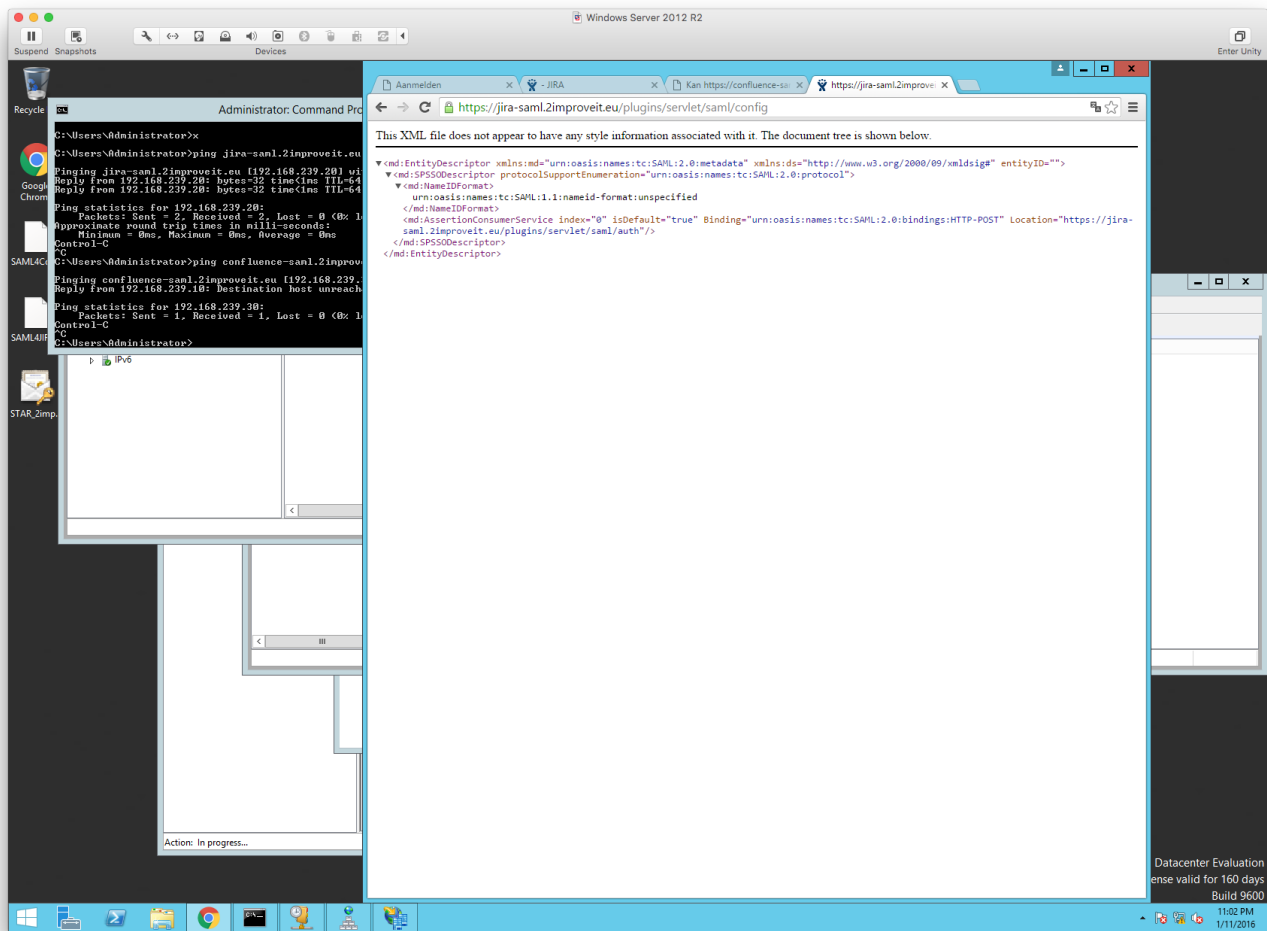
Step 1: Goto The AD FS and Click on **Add Relying Party Trust**



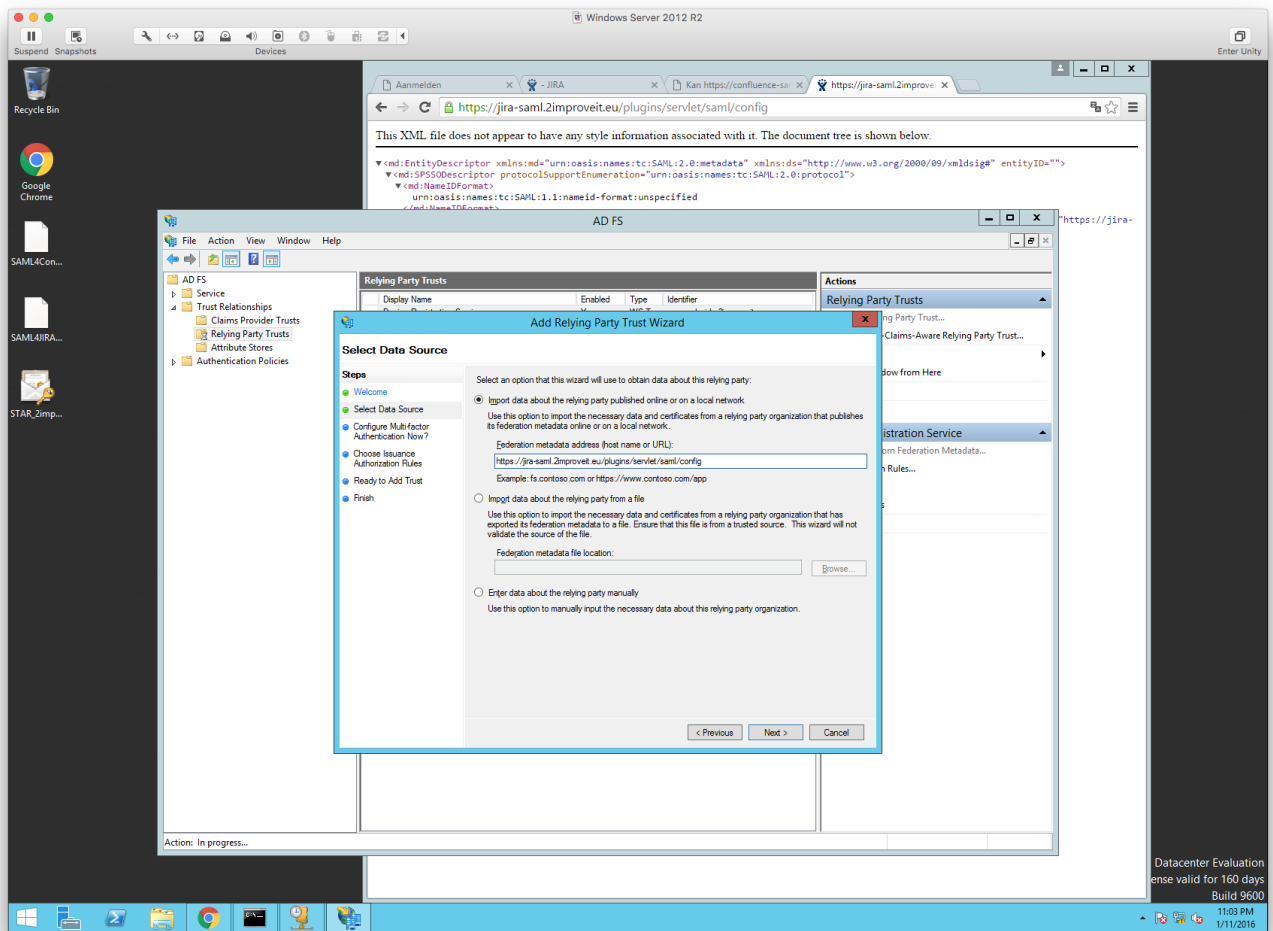
Step 2: Click On the **Start** Button



Step 3: Open a browser and type the URL <https://<applicationUrl>/plugins/servlet/saml/config> . This should show the following XML :

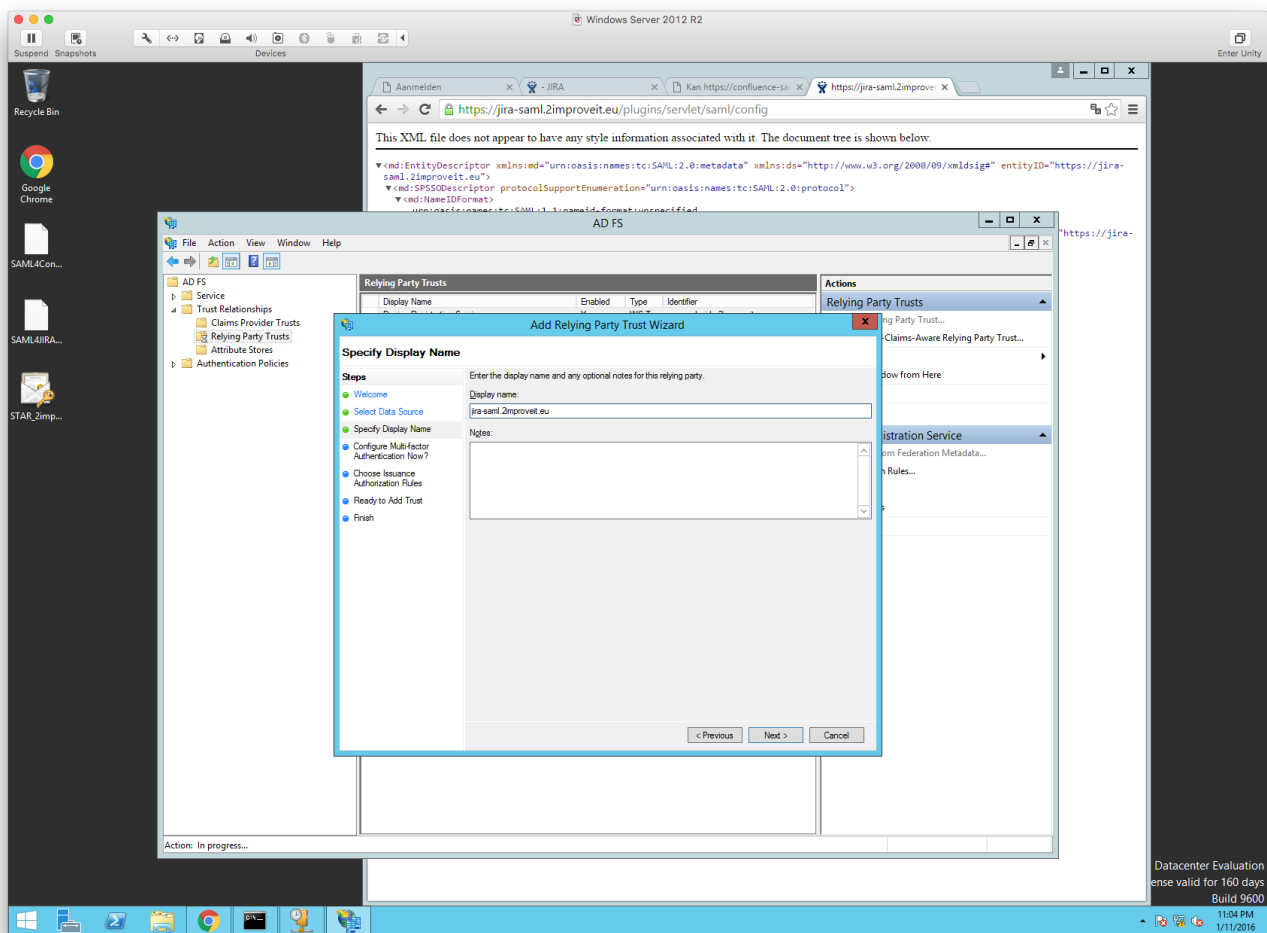


Step 4: Copy - Paste the URL

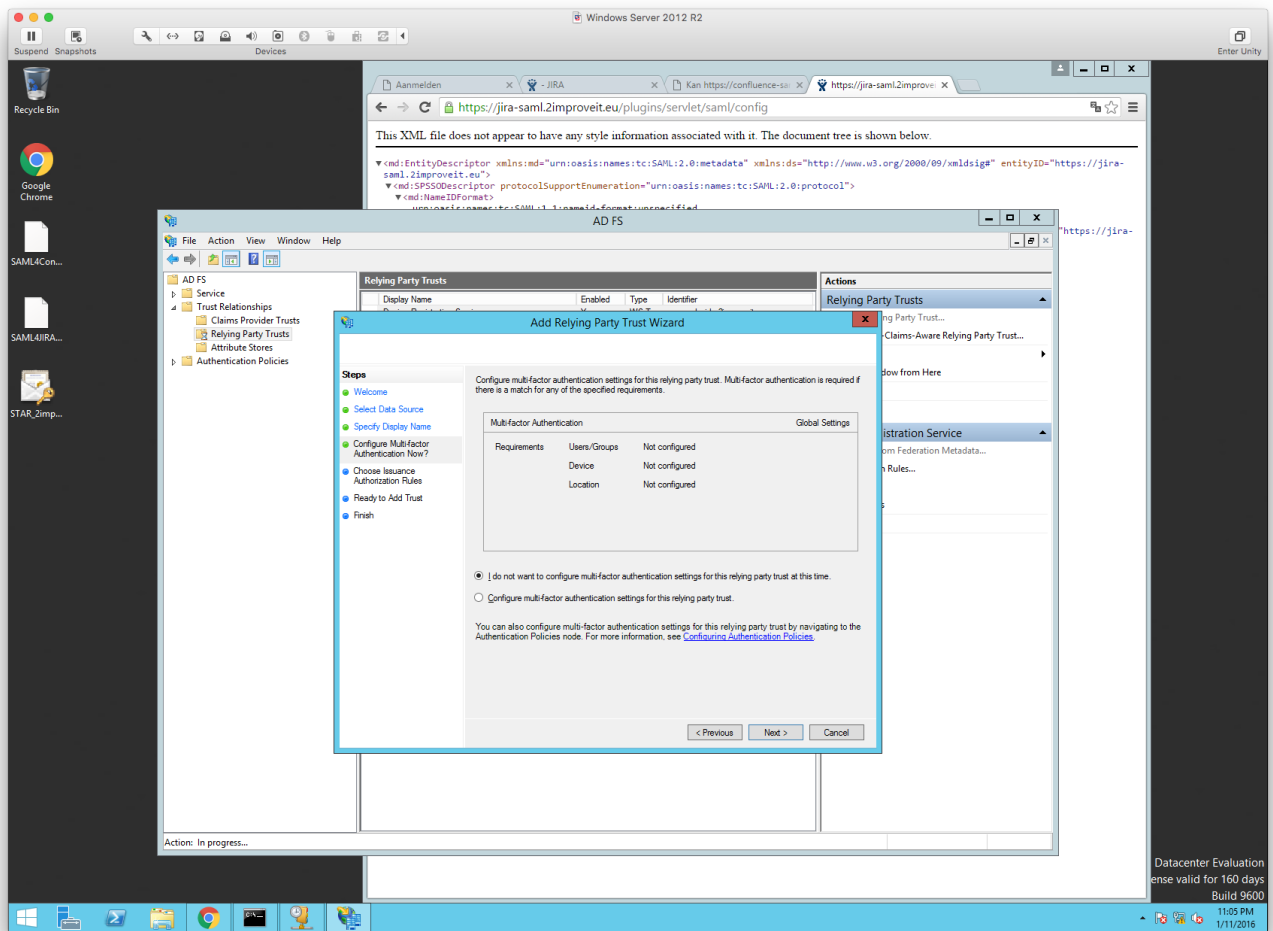


Datacenter Evaluation
License valid for 160 days
Build 9600

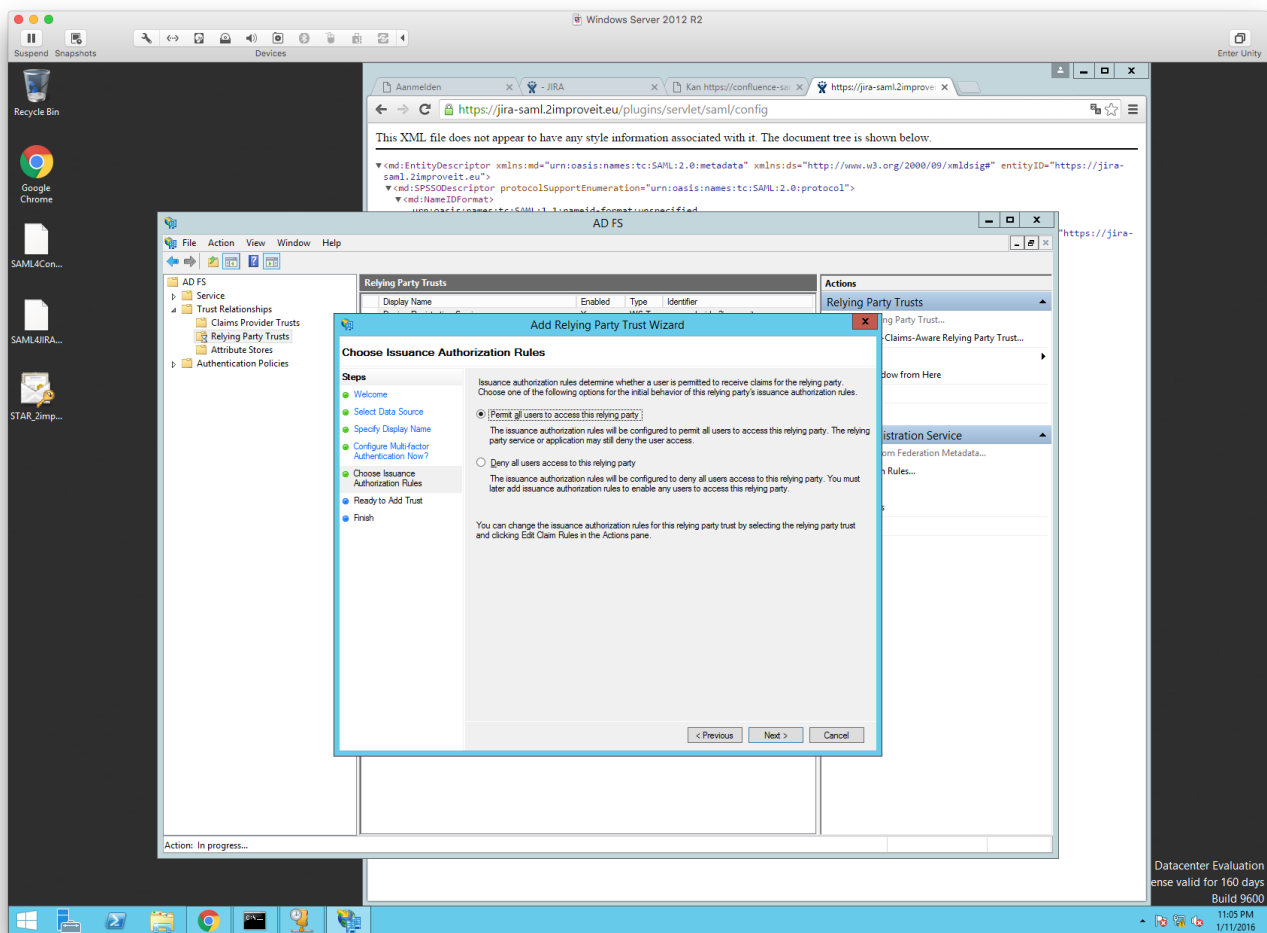
Step 5: Enter the display name



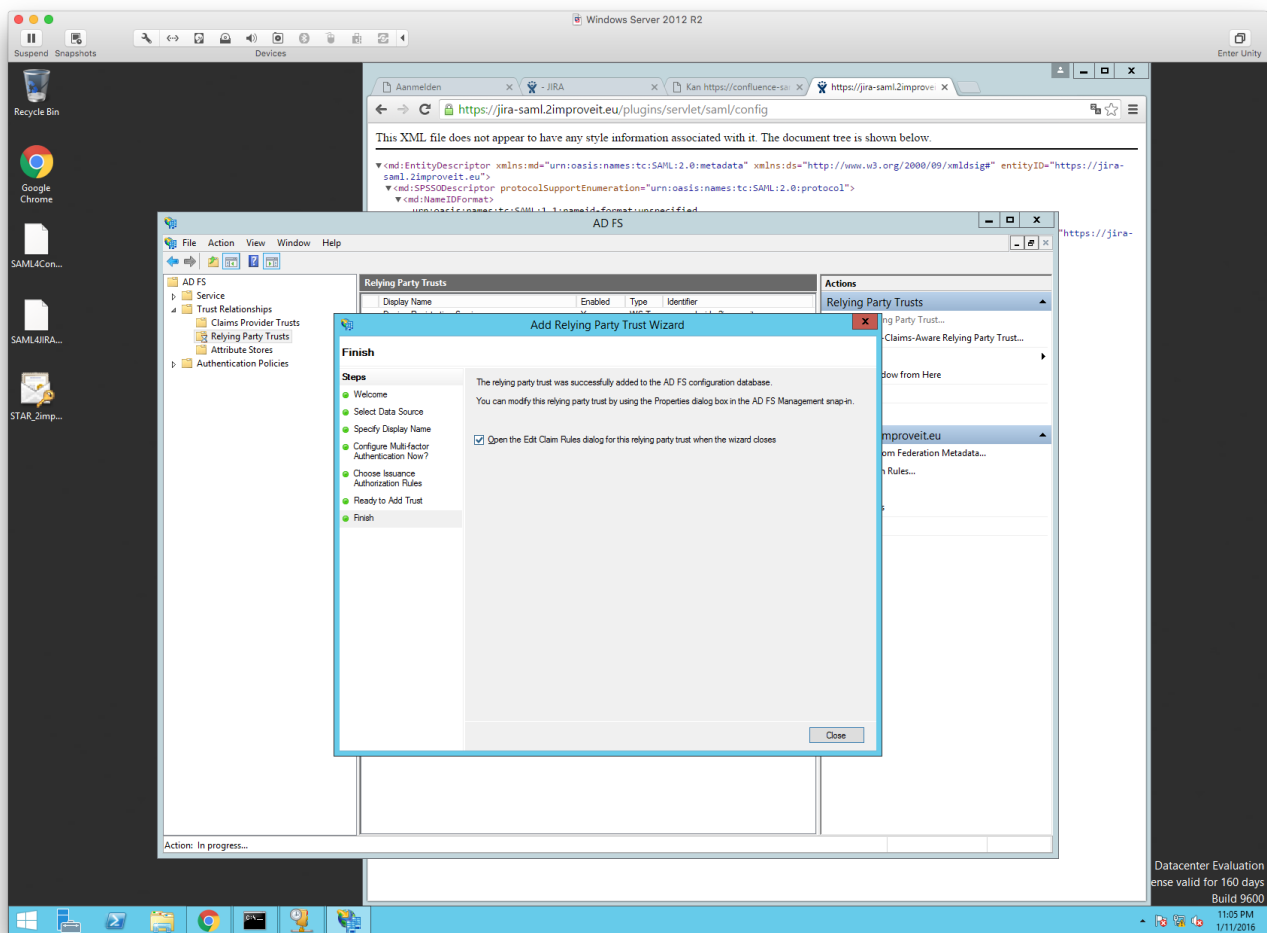
Step 6:



Step 7:



Step 8:



Step 9: Configure which Attribute of the person will be used for logging into the application using SAML e.g. SAM-Account-Name and select **Name Id** as Outgoing Claim Type

